



RUBBER SAFETY HYGIENE (GROUP) LTD

MULTIWASH™ PRO

CALL FOR A FREE DEMONSTRATION
0114 244 4592

rshgroup.co.uk



MULTIWASH™ PRO

A range of scrubber dryers that are simple to use, cost-effective and provide exceptional cleaning results after just one pass.



4 LITRE TANK
Accessible and removable tank for fast filling, emptying and cleaning



EASY
Handle assembly is quick and easy to assemble to the base, ready for the machine to be used



ACCESSORIES
7 litre solution tank for greater productivity



Trolley allows for easy transportation



Side brush allows you to clean right up to the edge



POWERFUL
Counter-rotating cylindrical brushes scrub and lift dirt, giving a more hygienic and deeper clean



VERSATILE
Effective on all floors with brushes available for carpets, hard floors, escalators and entrance matting



SIMPLE
Easy to use, manoeuvre and maintain



PRODUCTIVE*
Giving a quicker and more effective clean than traditional cleaning methods, saving you time and money



BATTERY POWERED
Run-time of up to 60 minutes giving excellent productivity and with no trailing cables, it minimises the risk of trips and slips



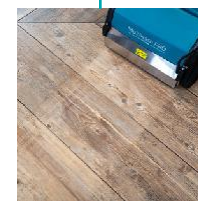
FAST CHARGE BATTERY
With a 2hr charge time and a quick change battery system, there will be minimum down time when charging



EFFICIENT
Wash, scrub and dry in just one pass, leaving floors ready to walk on in seconds



HYGIENIC
Tested in a certified lab to remove >99.99% of S. aureus, E. coli, P. aeruginosa and B. subtilis bacteria



INFECTION CONTROL
With the addition of the steam, dirt and grime will be removed easier than traditional cleaning methods



SEE THE
MULTIWASH™
PRO IN ACTION

*PRODUCTIVITY

Model	Mop	MWPRO240	MWPRO340	MWPRO440	MWPRO340-STEAM	MWPRO340-BATTERY
Theoretical	m ² /h	650	930	1150	930	930
Practical	m ² /h	150	250	430	350	350



Model	Multiwash™ PRO 240	Multiwash™ PRO 340	Multiwash™ PRO 440	Multiwash™ PRO 340/ STEAM	Multiwash™ PRO 340/ BATTERY
Product Code	MWPRO240	MWPRO340	MWPRO440	MWPRO340-STEAM	MWPRO340-BATTERY

SPECIFICATIONS

Specification	Unit	MWPRO240	MWPRO340	MWPRO440	MWPRO340-STEAM	MWPRO340-BATTERY
Voltage AC (~) / Frequency	V/Hz	230 / 50	230 / 50	230 / 50	230 / 50	-
Charging Voltage AC (~) / Frequency	V/Hz	-	-	-	-	100 - 240 / 50 - 60
Battery voltage DC	V/Hz	-	-	-	-	25.6
Battery details	Ah	-	-	-	-	12
Motor power	W	750	950	1150	950	328
Brush width	cm	24	34	44	34	34
Brush speed	rpm	650	650	650	650	400
Brush pressure	g/cm ²	220	190	170	190	170
Productivity rate	m ² /h	250	350	450	350	350
Sound pressure level	dB(A)	69	69	71	69	69
Solution tank capacity	l	4	4	4	4	4
Recovery tank capacity	l	2	3	4	3	3
Steam generator power	W	-	-	-	1250	-
Steam jet width	mm	-	-	-	340	-
Temperature of steam	°C	-	-	-	100	-
Run time	mins	-	-	-	-	60
Charge time	hrs	-	-	-	-	2
Dimensions (L x W x H)	cm	39 x 35 x 111	39 x 45 x 111	39 x 55 x 111	39 x 45 x 111	39 x 45 x 111
Weight	kg	21.5	26.5	31	31	23.5
Cable length	m	12	12	12	12	-

STANDARD ACCESSORIES

Standard brush - black (pack of 2)	90-0727-0000	90-0728-0000	90-0729-0000	90-0728-0000	90-0728-0000
Battery	-	-	-	-	WL0272-1
Charger (UK & Euro)	-	-	-	-	04-4089-0000

OPTIONAL ACCESSORIES

Soft brush - grey (pack of 2)	90-0730-0000	90-0731-0000	90-0732-0000	90-0731-0000	90-0731-0000
Hard brush - blue (pack of 2)	90-0733-0000	90-0734-0000	90-0735-0000	90-0734-0000	90-0734-0000
Escalator brush - blue (pack of 2)	90-1019-0000	90-1020-0000	90-1021-0000	90-1020-0000	90-1020-0000
Standard side brush - black (1 required)	90-0722-0000	90-0723-0000	90-0724-0000	90-0723-0000	90-0723-0000
Soft side brush - grey (1 required)	90-0842-0000	90-0845-0000	90-0848-0000	90-0845-0000	90-0845-0000
Hard side brush - blue (1 required)	90-0843-0000	90-0846-0000	90-0849-0000	90-0846-0000	90-0846-0000
Trolley	05-4781-0000	05-4781-0000	05-4781-0000	05-4781-0000	05-4781-0000
7 litre tank	90-0826-0000	90-0826-0000	90-0826-0000	90-0826-0000	90-0826-0000



EDUCATION



HEALTHCARE



HIRE



LEISURE



RETAIL



VETERINARY



RUBBER SAFETY HYGIENE (GROUP) LTD

Rubber Safety Hygiene (Group) Ltd
2 Enterprise Works
Hunsley Street
Sheffield
S4 8DY

sales@rshgroup.co.uk | 0114 244 4592 | www.rshgroup.co.uk

REV.03 - (0924)